

Chapter : 1201 Supreme Judge Department

- Creation:** The Supreme Judge Department was established in 1921 and thereto affiliated Sharia' courts in different governorates and districts in the Kingdom and it works as per " Supreme Judge Department administration bylaw " no. 18 for the year 1993 issued as per Article 120 of the Constitution
- Vision :** Coherent family away from conflicts exercises each individual and commit to his duties as per the provisions of tolerant Islamic Sharia'
- Mission:** Developing the performance of religious courts in order to strengthen their independence and freedom in decision-making with efficiency and integrity, consistent with their role, privacy, reinforcing justice and realizing social security.

Tasks of the Ministry / Department:

- Family reform and guidance.
- Settle conflicts in personal cases, endowments and blood money.
- Document rights and register arguments.
- Release, control and divide inheritances among heirs.
- Marriages, divorces and dowries.
- Exclusion from inheritance, give permission for custodian and guardian and punish them.
- Gift, blood money and inheritance requests.
- Interdiction and lift an interdiction, prove maturity.
- Implement provisions issued by Sharia courts.

Ministry/Department Contribution to the Achievement of the National Objectives:

- Enhance social security.
- Participate in achieving fairness.
- Contribute to establishing national database through comprehensive electronic linkage with state's bodies and e-government.
- Contribute in developing local society, provide good governance services and enhance country's facilities.

Major Issues and Challenges which face the Ministry / Department:

- Inadequate leased premises for the function of civil courts.
- The limited specialists in legislations preparation and drafting.
- Weakness of communication channels among entities that assume the preparation and drawing of legislations and entities that assume their discussion, approval and targeted entities.
- Insufficient numbers of qualified employees in comparison with the volume of work.
- Renting premises due to the lack of land earmarked for building civil justice palaces.

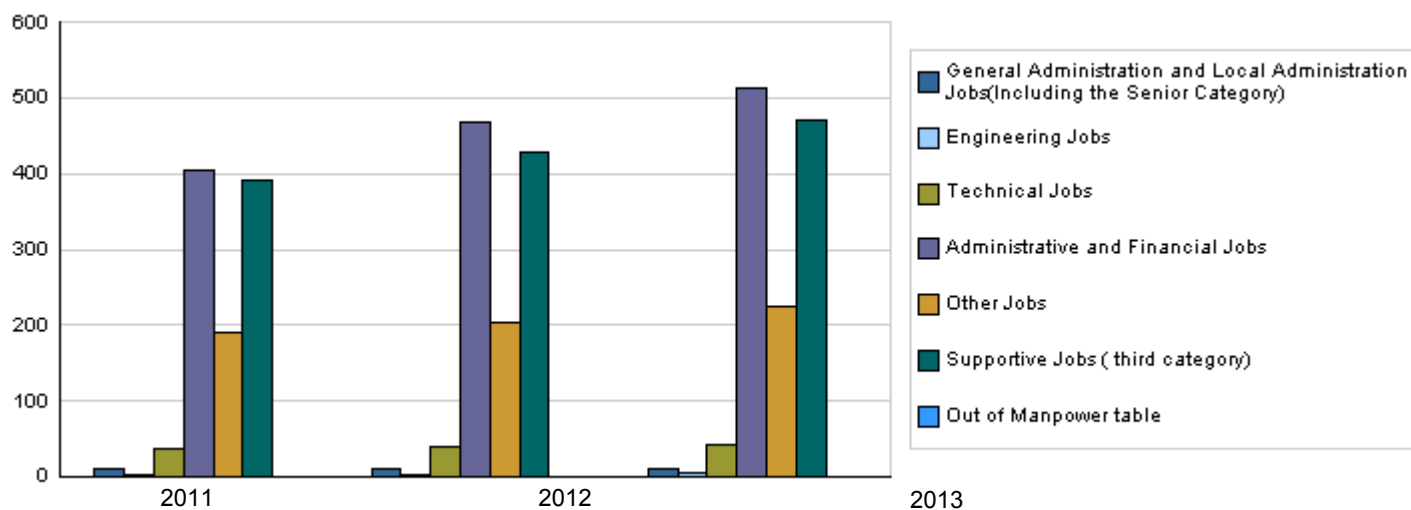
CHAPTER : 1201 Supreme Judge Department

Strategic Objectives and Performance Indicators of the Ministry / Department

Strategic Objective	Performance Indicator	base year	Value	Actual Value	Target Value	Primary Self Evaluation	Target Value		
				2011	2012		2012	2013	2014
1 - Upgrading the institutional capacity of Supreme Judge Department.	1 Percentage of achieved legislations to the total required to be achieved.	2006	%15	%50	%75	%65	%80	%85	%90
	2 Percentage of the executed computerized procedures.	2006	%20	%60	%65	%60	%70	%75	%80
2 - Upgrading the efficiency of the Sharia' Legal Instrument.	1 Satisfaction degree of the Shar'ia courts clients.	2006	%60	%80	%80	%80	%85	%90	%95
	2 Percentage of inheritances cases to the total of distributed inheritances.	2006	-	%35	%35	%35	%45	%50	%60

Number of Staff of the Ministry / Department

Group	Job	Actual 2011			Primary 2012			Estimated 2013		
		Male	Female	Total	Male	Female	Total	Male	Female	Total
General Administration and Local Adminis	Chief justice	1	0	1	1	0	1	1	0	1
	Sharia Manager	1	0	1	1	0	1	1	0	1
	President of Appeal	4	0	4	4	0	4	4	0	4
	Deputy president of Appeal	4	0	4	4	0	4	4	0	4
Engineering Jobs	Engineering jobs	2	0	2	3	0	3	4	0	4
Technical Jobs	Technical jobs	36	0	36	39	0	39	43	0	43
Administrative and Financial Jobs	Administrative and financial jo	405	0	405	467	0	467	514	0	514
Other Jobs	Judges	168	0	168	173	0	173	191	0	191
	notary, inspector	23	0	23	30	0	30	33	0	33
Supportive Jobs (third category)	Supportive jobs(third category)	390	0	390	427	0	427	470	0	470
Total		1034	0	1034	1149	0	1149	1265	0	1265
Out of Manpower table	Out of manpower table	0	0	0	0	0	0	0	0	0
Grand Total		1034	0	1034	1149	0	1149	1265	0	1265
Total Cost of Salaries		7779576	0	7779576	8647000	0	8647000	9166000	0	9166000



Key Information of the Ministry / Department

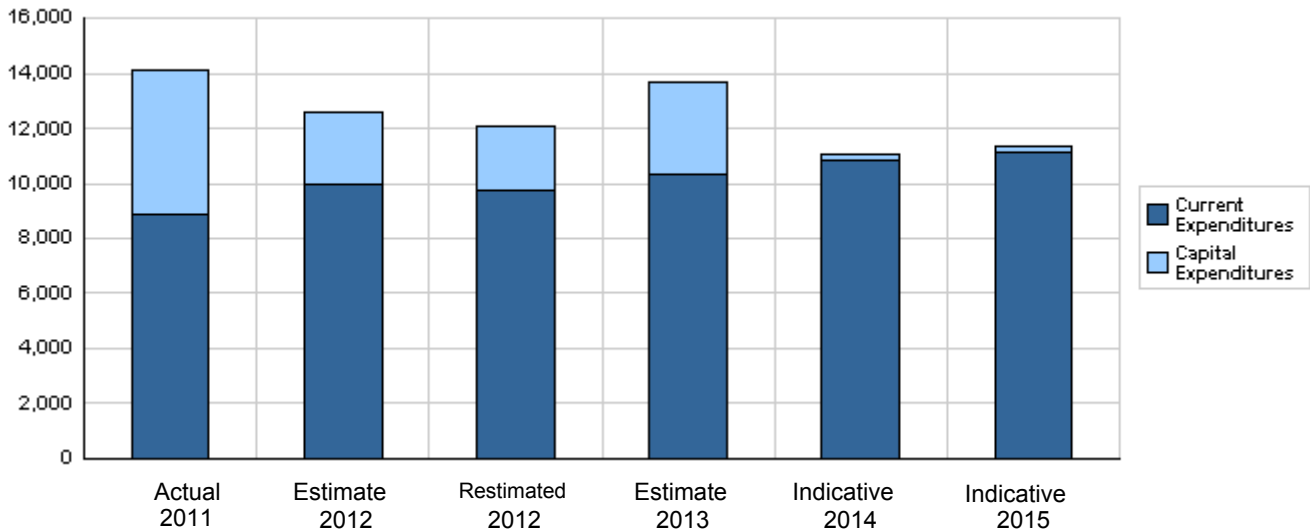
No.	Description	base year	Value	Primary 2012	Estimated 2013												
					Irbid	Mafraq	Jarsh	Ajloun	Amman	Balqa'	Zaraq'	Madaba	Karak	Ma'an	Tafila	Aqaba	Total
1	Number of considered cases.	2007	50151	75158	17896	3175	2043	1704	33256	3803	12780	1480	2467	1094	673	940	81311
2	Number of executive settled cases	2007	1992	47153	14268	2450	1536	1650	16250	2330	6854	1200	1684	360	856	627	50065
3	Number of marriage contracts	2007	65027	64257	12634	3067	1911	1356	25342	4147	9669	1717	2206	1181	797	1230	65257
4	Number of divorce cases.	2007	13530	16086	2813	704	359	185	6926	947	2814	393	437	291	130	341	16340
5	Number of considered Khul' cases	2007	1635	806	45	15	15	7	550	25	127	13	15	14	4	20	850
6	Number of training activities	2007	17	46	12	0	0	0	30	0	0	0	8	0	0	0	50
7	Number of sharia' courts.	2007	60	68	13	4	1	2	16	7	6	2	5	7	3	2	68
8	The department's revenues	2007	6051	7320	881	195	131	86	4331	288	917	122	155	81	56	93	7336
9	Number of rehabilitation and family	2009	0	7	1	0	0	0	1	1	1	0	1	0	0	0	5

Overall Summary of Expenditures for Chapter 1201- Supreme Judge Department
for the years 2011 - 2015

(In JDs)

Description		Actual 2011	Estimate 2012	Re_Estimate 2012	Estimate 2013	Indicative		
						2014	2015	
Group	Current Expenditures							
2111	Salaries, Wages and allowances	7,444,695	8,383,841	8,299,400	8,759,000	9,189,000	9,465,000	
2121	Social Security Contributions	334,881	348,000	348,000	407,000	415,000	429,000	
2211	Use of Goods and Services	959,580	991,000	842,000	973,000	992,250	1,014,000	
2511	Subsidies to public corporations	100,000	200,000	200,000	200,000	200,000	200,000	
2821	Other current expenses	23,924	25,000	25,000	20,000	20,000	20,000	
3112	Machinery and Equipment	0	0	0	0	0	0	
3113	Other Fixed Assets	0	0	0	0	0	0	
Total current expenditures		8,863,080	9,947,841	9,714,400	10,359,000	10,816,250	11,128,000	
		Capital Expenditures						
2211	Use of Goods and Services	561,089	503,500	469,000	170,000	165,000	165,000	
2822	Other Capital expenditures	2,994	5,000	5,000	0	0	0	
3111	Buildings and Constructions	3,763,000	1,700,000	1,680,000	3,100,000	0	0	
3112	Machinery and Equipment	277,743	180,000	155,000	45,000	35,000	35,000	
3113	Other Fixed Assets	601,016	235,000	55,000	10,000	10,000	10,000	
3122	Inventories	24,924	20,000	15,000	20,000	20,000	20,000	
3141	Lands	0	0	0	0	0	0	
Total capital expenditures		5,230,766	2,643,500	2,379,000	3,345,000	230,000	230,000	
Treasury		5,230,766	2,643,500	2,379,000	3,345,000	230,000	230,000	
Total current and capital expenditures		14,093,846	12,591,341	12,093,400	13,704,000	11,046,250	11,358,000	

Graph of the current and capital expenditures for the years 2011 - 2015 (Thousands of JDs)

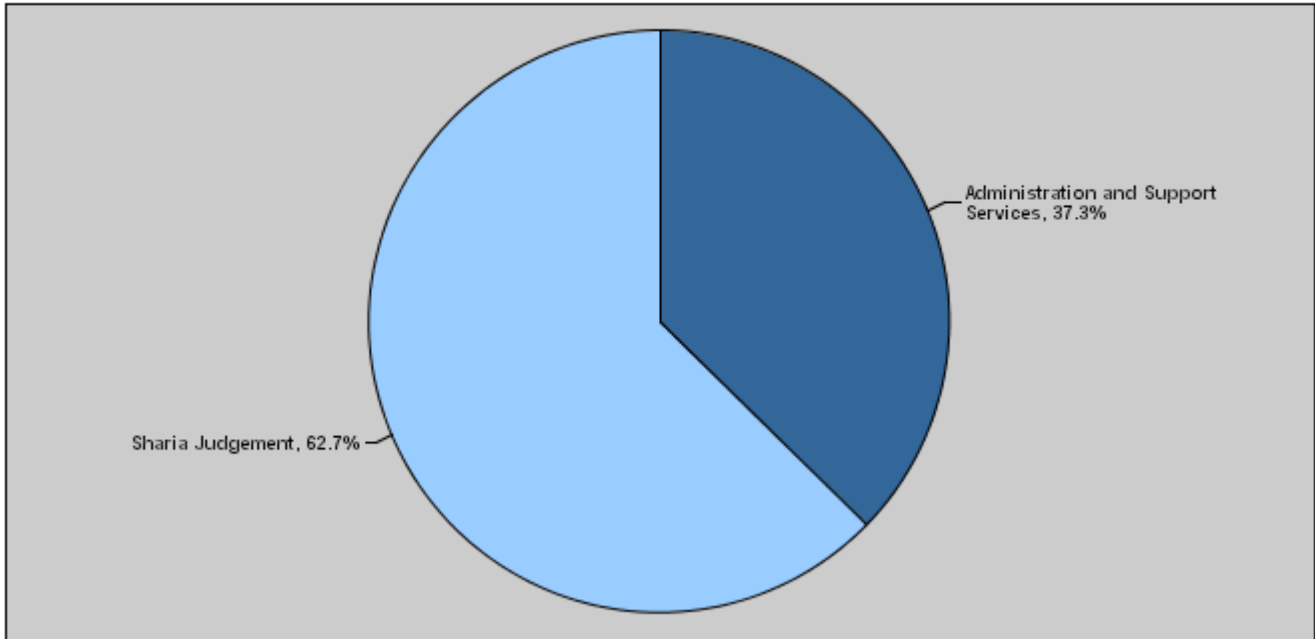


**Budget of Chapter 1201 - Supreme Judge Department
For the Year 2013 Distributed According to Program**

(InJDs)

Prog.	Description	Current Expenditures	Capital Expenditure	Total Expenditure
1901	Administration and Support Services	1,993,000	3,120,000	5,113,000
1905	Sharia Judgement	8,366,000	225,000	8,591,000
Total		10,359,000	3,345,000	13,704,000

Total Expenditures for the Year 2013 Distributed According to Program



Estimated Allocations For Females distributed according to Programs for the Years 2011 - 2015

Program	2011	2012	2013	2014	2015
1905 Sharia Judgement	70000	40000	15000	15000	15000
Total	70000	40000	15000	15000	15000

Budget Chapter 1201 - Supreme Judge Department Distributed According to the Program

1901	Administration and Support Services Program
------	---

Objective of the program :

To develop and update the legislations on all levels and provide the necessary financial support to implement activities and prepare strategic and executive plans for all directorates and departments of the department to achieve their objectives.

The strategic objective related to the program :

1- Upgrade the institutional capacity of Supreme Judge Department.

Directorates associated with the program :

- 1- Legal affairs.
- 2- Financial affairs.
- 3- IT.
- 4- Internal Control.

Services provided by the program :

- Develop and update legislations related to women and children and provide subsidy needed to implement and follow up activities in all programs

Staff working in the program :

The program is implemented through a functional staff in 2012 estimated with (185) staff, including (185) males and (0) females .

Performance Measurement Indicators for program

	Performance Measurement Indicator	Base Year	Value	Actual value	Target Value	First Self Evaluation	Target		
				2011	2012	2012	2013	2014	2015
1	Number of legislations accomplished during the year.	2006	2	3	4	1	3	2	1
2	Number of computers / number of employees.	2006	%50	%60	%70	%70	%80	%90	%95
3	Percentage of the executed computerized procedures through computers in each transaction.	2006	%20	%60	%65	%60	%75	%85	%90

Appropriations OF Administration and Support Services Program as Per Activities and Projects. (In JDs)

Activities and Projects	Actual	Estimate	Re_Estimate	Estimate	Indicative	
	2011	2012	2012	2013	2014	2015
Current Expenditures	1,566,132	1,844,350	1,706,909	1,993,000	2,145,250	2,217,400
601 Administrative and Support Service	1,566,132	1,844,350	1,706,909	1,993,000	2,145,250	2,217,400
Capital Expenditures	4,411,658	2,040,000	1,830,000	3,120,000	20,000	20,000
002 Supreme Judge Department buildin	4,218,042	1,870,000	1,680,000	3,100,000	0	0
004 Computerizing religious courts/Head	93,673	110,000	110,000	20,000	20,000	20,000
007 Courts of Jerusalem	99,943	60,000	40,000	0	0	0
Program / Treasury	4,411,658	2,040,000	1,830,000	3,120,000	20,000	20,000
Total Program	5,977,790	3,884,350	3,536,909	5,113,000	2,165,250	2,237,400

Budget Chapter 1201 - Supreme Judge Department Distributed According to the Program

1905	Sharia Judgement Program
Objective of the program :	
To enhance the independence of Judicature as per the foundations and standards of the international Judicature and improve Jordan's location in the international indicators in the field of Judicature.	
The strategic objective related to the program :	
1- Upgrade the efficiency of Sharia' Judiciary services.	
Directorates associated with the program :	
Inspection directorate	
Services provided by the program :	
1- Settle conflicts, document rights, divide and control heritage and transfer the funds of underages (children) to orphans fund to preserve them as per personal status law. 2- Implement judgements issued by Shari'a Courts	
Staff working in the program :	
The program is implemented through a functional staff in 2012 estimated with (964) staff, including (964) males and (0) females .	

Performance Measurement Indicators for program

Performance Measurement Indicator	Base Year	Value	Actual value	Target Value	First Self Evaluation	Target		
			2011	2012	2012	2013	2014	2015
1 Reducing court session time.	2007	-	%45	%60	%55	%65	%70	%75
2 Number of the qualified judges' assistants.	2006	1	2	2	2	3	3	4
3 Reducing the inheritance cases after distribution.	2007	%60	%70	%75	%70	%80	%85	%90
4 Reducing the number of cases registered at courts.	2007	-	%15	%20	%15	%25	%30	%35

Appropriations OF Sharia Judgement Program as Per Activities and Projects. (In JDs)

Activities and Projects	Actual	Estimate	Re_Estimate	Estimate	Indicative	
	2011	2012	2012	2013	2014	2015
Current Expenditures	7,296,948	8,103,491	8,007,491	8,366,000	8,671,000	8,910,600
601 Sharia Litigation	7,196,948	7,903,491	7,807,491	8,166,000	8,471,000	8,710,600
602 Joint Fund (Quds Sharia Courts)	100,000	200,000	200,000	200,000	200,000	200,000
Capital Expenditures	819,108	603,500	549,000	225,000	210,000	210,000
001 Sharia Judgement Program Adminis	193,686	110,000	105,000	100,000	110,000	110,000
002 Establishment of sharia execution d	17,260	0	0	0	0	0
004 Household improvement and guidan	192,734	140,000	114,000	30,000	30,000	30,000
005 Establishment of the sharia courts A	10,706	0	0	0	0	0
006 Preparing the sharia cassation legis	4,999	0	0	0	0	0
007 Establishment of General Prosecutio	21,668	25,000	20,000	5,000	0	0
008 Preparing the legislation of establish	14,990	0	0	0	0	0
010 Developing the archiving and filing s	84,917	90,000	90,000	10,000	0	0
011 Delegating and training the judges/S	62,279	30,000	20,000	10,000	10,000	10,000
012 Establishing the inspection directora	19,612	0	0	0	0	0
013 Computerizing sharia courts-sharia	186,322	200,000	200,000	70,000	60,000	60,000
017 Judges assistants system	9,935	8,500	0	0	0	0
Program / Treasury	819,108	603,500	549,000	225,000	210,000	210,000
Total Program	8,116,056	8,706,991	8,556,491	8,591,000	8,881,000	9,120,600

Chapter :1201 Supreme Judge Department

Vision Coherent family away from conflicts excercises each individual and commit to his duties as per the provisions of tolerant Islamic Sharia'

Mission Developing the performance of religious courts in order to strengthen their independence and freedom in decision-making with efficiency and integrity, consistent with their role, privacy, reinforcing justice and realizing social security.

Legal Framework : Regulation No. (18) for the year 1993 - Supreme Judge Department Organization and Administration Regulation.

Strategic Plan :

Preparation Year :2010

Period Covered By The Plan :2010-2013

Strategic Objectives / Performance Indicators

Strategic Objectives Description	Performance Measurement Indicators	Base Value		Actual Value	Target Value	Initial Internal Evaluation	Target		
		Base Year	Value				2011	2012	2015
									2013
1 - Upgrading the institutional capacity of Supreme Judge Department.	1 Percentage of achieved legislations to the total required to be achieved.	2006	%15	%50	%75	%65	%80	%85	%90
	2 Percentage of the executed computerized procedures.	2006	%20	%60	%65	%60	%70	%75	%80
2 - Upgrading the efficiency of the Sharia' Legal Instrument.	1 Satisfaction degree of the Shar'ia courts clients.	2006	%60	%80	%80	%80	%85	%90	%95
	2 Percentage of inheritances cases to the total of distributed inheritances.	2006	-	%35	%35	%35	%45	%50	%60

Programs / Performance Indicators

Goal	Programs	Description of Performance Indicators	Base Value		Actual Value	Target Value	Initial Internal	Target		
			Base Year	Value				2011	2012	2015
										2013
1	1901 Administration and Support Services	1 Number of legislations accomplished during the year.	2006	2	3	4	1	3	2	1
		2 Number of computers / number of employees.	2006	%50	%60	%70	%70	%80	%90	%95
		3 Percentage of the executed computerized procedures through computers in each transaction.	2006	%20	%60	%65	%60	%75	%85	%90
2	1905 Sharia Judgement	1 Reducing court session time.	2007	-	%45	%60	%55	%65	%70	%75
		2 Number of the qualified judges' assistants.	2006	1	2	2	2	3	3	4
		3 Reducing the inheritance cases after distribution.	2007	%60	%70	%75	%70	%80	%85	%90
		4 Reducing the number of cases registered at courts.	2007	-	%15	%20	%15	%25	%30	%35

Programs Appropriations

Goal	Programs		Actual	Estimated	Re-stemated	Estimated	Indecative	Indecative
			2011	2012	2012	2013	2014	2015
1	1901 Administration and Support Services	Current	1566132	1844350	1706909	1993000	2145250	2217400
		Capital	4411658	2040000	1830000	3120000	20000	20000
		Total	5977790	3884350	3536909	5113000	2165250	2237400
2	1905 Sharia Judgement	Current	7296948	8103491	8007491	8366000	8671000	8910600
		Capital	819108	603500	549000	225000	210000	210000
		Total	8116056	8706991	8556491	8591000	8881000	9120600
		Total of Current	8863080	9947841	9714400	10359000	10816250	11128000
		Total of Capital	5230766	2643500	2379000	3345000	230000	230000
		Total of Chapter	14093846	12591341	12093400	13704000	11046250	11358000

Current Activities Appropriations

Prog.	Projects	Actual	Estimated	Re-stemated	Estimated	Indecative	Indecative
		2011	2012	2012	2013	2014	2015
1901	601 Administrative and Support Services	1566132	1844350	1706909	1993000	2145250	2217400
	Total of Program	1566132	1844350	1706909	1993000	2145250	2217400
1905	601 Sharia Litigation	7196948	7903491	7807491	8166000	8471000	8710600
	602 Joint Fund (Quds Sharia Courts)	100000	200000	200000	200000	200000	200000
	Total of Program	7296948	8103491	8007491	8366000	8671000	8910600
	Total	8863080	9947841	9714400	10359000	10816250	11128000

Capital Projects Appropriations

Prog.	Projects		Actual	Estimated	Re-estimated	Estimated	Indecative	Indecative
			2011	2012	2012	2013	2014	2015
1901	002	Supreme Judge Department building	4218042	1870000	1680000	3100000	0	0
	004	Computerizing religious courts/Headquarters	93673	110000	110000	20000	20000	20000
	007	Courts of Jerusalem	99943	60000	40000	0	0	0
		Total of Program	4411658	2040000	1830000	3120000	20000	20000
1905	001	Sharia Judgement Program Administration Project	193686	110000	105000	100000	110000	110000
	002	Establishment of sharia execution directorate-Religious Courts	17260	0	0	0	0	0
	004	Household improvement and guidance	192734	140000	114000	30000	30000	30000
	005	Establishment of the sharia courts Assembly - Zarqa	10706	0	0	0	0	0
	006	Preparing the sharia cassation legislation and establishing the sharia c	4999	0	0	0	0	0
	007	Establishment of General Prosecution Court	21668	25000	20000	5000	0	0
	008	Preparing the legislation of establishing the inheritance directorate	14990	0	0	0	0	0
	010	Developing the archiving and filing system/Sharia Courts	84917	90000	90000	10000	0	0
	011	Delegating and training the judges/Sharia Courts	62279	30000	20000	10000	10000	10000
	012	Establishing the inspection directorate	19612	0	0	0	0	0
	013	Computerizing sharia courts-sharia courts	186322	200000	200000	70000	60000	60000
	017	Judges assistants system	9935	8500	0	0	0	0
		Total of Program	819108	603500	549000	225000	210000	210000
		Total	5230766	2643500	2379000	3345000	230000	230000

Overall Summary of Current Expenditures for the years 2011 - 2015

Chapter: 1201 Supreme Judge Department

(In JDs)

Group	Item	Description	Actual 2011	Estimated 2012	Re-estimated 2012	Estimated 2013	Indicative 2014	Indicative 2015
21		Compensations of Employees						
2111		Salaries, Wages and allowances						
	101	Classified Employees' Salaries	1703086	1922751	1922751	1991000	2072000	2123000
	102	Permanent Unclassified Employees' Salaries	827525	1619391	1619391	1710000	1780000	1820000
	103	Contract Employees' Salaries	32288	38945	38945	33000	35000	37000
	105	Personal Cost of Living Allowance	2301295	1803825	1770063	1860000	1939000	1986000
	106	Family Allowance	196341	226796	226117	237000	249000	265000
	107	Basic Allowance	269515	0	0	0	0	0
	110	Overtime Allowance	34968	35000	35000	45000	55000	60000
	111	Additional Allowance	88762	557633	547633	580000	615000	631000
	112	Other Allowances	1771696	1940500	1900500	2018000	2125000	2166000
	113	Transportation Allowance	104971	113000	113000	135000	154000	174000
	114	Transport Allowance	84268	96000	96000	122000	137000	175000
	116	Employees' bonuses	29980	30000	30000	28000	28000	28000
Total			7444695	8383841	8299400	8759000	9189000	9465000
2121		Social Security Contributions						
	301	Social Security	334881	348000	348000	407000	415000	429000
Total			334881	348000	348000	407000	415000	429000
22		Use of Goods and Services						
2211		Use of Goods and Services						
	201	Rents	513516	400000	380000	410000	410000	410000
	202	Telecommunications Services	142653	160000	123942	90000	90500	94500
	203	Water	14690	20000	13900	10000	13000	13000
	204	Electricity	39991	67800	67800	130000	132200	136000
	205	Fuels	99968	117500	82500	116000	120400	123500
	206	Maintenance of Machines, furniture and accessories	5145	13000	11500	13200	15500	15500
	207	Maintenance of Vehicles, Heavy Duty Machinery	7784	16000	12000	16000	16300	16700
	208	Repair and maintenance of buildings and accessories	4989	12300	9800	12500	12500	13000
	209	Office Supplies	49992	65000	51000	50000	52500	55200
	210	Raw materials (Medicines, Clothes, Food, Fuel)	1494	17000	9000	13000	13850	15500
	211	Cleaning Services and supplies (including cleaning materials)	49927	59000	42558	69000	69900	71900
	212	Insurance	9959	15000	13000	13000	13000	14000
	213	Official Travel Missions	7488	10300	7800	12300	12900	14500
	214	Other goods and services expenses	11984	18100	17200	18000	19700	20700
Total			959580	991000	842000	973000	992250	1014000
25		Subsidies						
2511		Subsidies to public corporations						
	304	Subsidies to nonfinancial public corporation	100000	200000	200000	200000	200000	200000
Total			100000	200000	200000	200000	200000	200000
28		Other expenditures						
2821		Other current expenses						
	303	Scientific Scholarships and Training Course	11949	14000	14000	11000	11000	11000
	305	Non-Employees' Bonuses	11975	11000	11000	9000	9000	9000
Total			23924	25000	25000	20000	20000	20000
Total of Chapter			8863080	9947841	9714400	10359000	10816250	11128000

Current Expenditures According to Program and Activities For The Years 2011 - 2015

Chapter : 1201 - Supreme Judge Department

(In JDs)

Program : 1901 - Administration and Support Services								
Activity : 601 - Administrative and Support Services								
Group	Item	Description	Actual 2011	Estimated 2012	Re-estimated 2012	Estimated 2013	Indicative 2014	Indicative 2015
21		Compensations of Employees						
2111		Salaries, Wages and allowances						
	101	Classified Employees' Salaries	217892	256730	256730	275000	295000	300000
	102	Permanent Unclassified Employees' Salaries	102679	202548	202548	230000	255000	265000
	103	Contract Employees' Salaries	32288	38945	38945	33000	35000	37000
	105	Personal Cost of Living Allowance	271660	225000	191238	225000	249000	255000
	106	Family Allowance	26132	30970	30291	32000	34000	36000
	107	Basic Allowance	40571	0	0	0	0	0
	110	Overtime Allowance	34968	35000	35000	45000	55000	60000
	111	Additional Allowance	26983	107657	97657	115000	125000	130000
	112	Other Allowances	393929	468000	428000	492000	535000	550000
	113	Transportation Allowance	19978	24000	24000	30000	34000	39000
	114	Transport Allowance	19273	25000	25000	30000	35000	40000
	116	Employees' bonuses	14994	15000	15000	14000	14000	14000
		Total	1201347	1428850	1344409	1521000	1666000	1726000
2121		Social Security Contributions						
	301	Social Security	92501	95000	95000	115000	120000	124000
		Total	92501	95000	95000	115000	120000	124000
22		Use of Goods and Services						
2211		Use of Goods and Services						
	201	Rents	37767	0	0	0	0	0
	202	Telecommunications Services	44937	50000	40000	45000	45000	45000
	203	Water	4799	7000	4000	7000	8000	8000
	204	Electricity	9995	23000	23000	80000	80000	80000
	205	Fuels	69979	74300	56300	75000	75000	76000
	206	Maintenance of Machines, furniture and acco	1987	7300	6300	7500	8000	8000
	207	Maintenance of Vehicles, Heavy Duty Machi	6978	14000	10000	14000	14000	14400
	208	Repair and maintenance of buildings and a	990	2700	2700	2500	2500	3000
	209	Office Supplies	39999	45000	45000	30000	30000	32000
	210	Raw materials (Medicines, Clothes, Food, F	998	12000	6000	8000	8250	9000
	211	Cleaning Services and supplies (including	11975	33700	25700	42000	42000	43000
	212	Insurance	9959	15000	13000	13000	13000	14000
	213	Official Travel Missions	2489	4000	3000	5000	5500	7000
	214	Other goods and services expenses	5993	8000	8000	8000	8000	8000
		Total	248845	296000	243000	337000	339250	347400
28		Other expenditures						
2821		Other current expenses						
	303	Scientific Scholarships and Training Course	11949	14000	14000	11000	11000	11000
	305	Non-Employees' Bonuses	11490	10500	10500	9000	9000	9000
		Total	23439	24500	24500	20000	20000	20000
		Total of Activity	1566132	1844350	1706909	1993000	2145250	2217400
		Total of Program	1566132	1844350	1706909	1993000	2145250	2217400

Current Expenditures According to Program and Activities For The Years 2011 - 2015

Chapter : 1201 - Supreme Judge Department

(In JDs)

Program : 1905 - Sharia Judgement								
Activity : 601 - Sharia Litigation								
Group	Item	Description	Actual 2011	Estimated 2012	Re-estimated 2012	Estimated 2013	Indicative 2014	Indicative 2015
21		Compensations of Employees						
2111		Salaries, Wages and allowances						
	101	Classified Employees' Salaries	1485194	1666021	1666021	1716000	1777000	1823000
	102	Permanent Unclassified Employees' Salaries	724846	1416843	1416843	1480000	1525000	1555000
	105	Personal Cost of Living Allowance	2029635	1578825	1578825	1635000	1690000	1731000
	106	Family Allowance	170209	195826	195826	205000	215000	229000
	107	Basic Allowance	228944	0	0	0	0	0
	111	Additional Allowance	61779	449976	449976	465000	490000	501000
	112	Other Allowances	1377767	1472500	1472500	1526000	1590000	1616000
	113	Transportation Allowance	84993	89000	89000	105000	120000	135000
	114	Transport Allowance	64995	71000	71000	92000	102000	135000
	116	Employees' bonuses	14986	15000	15000	14000	14000	14000
		Total	6243348	6954991	6954991	7238000	7523000	7739000
2121		Social Security Contributions						
	301	Social Security	242380	253000	253000	292000	295000	305000
		Total	242380	253000	253000	292000	295000	305000
22		Use of Goods and Services						
2211		Use of Goods and Services						
	201	Rents	475749	400000	380000	410000	410000	410000
	202	Telecommunications Services	97716	110000	83942	45000	45500	49500
	203	Water	9891	13000	9900	3000	5000	5000
	204	Electricity	29996	44800	44800	50000	52200	56000
	205	Fuels	29989	43200	26200	41000	45400	47500
	206	Maintenance of Machines, furniture and accessories	3158	5700	5200	5700	7500	7500
	207	Maintenance of Vehicles, Heavy Duty Machinery	806	2000	2000	2000	2300	2300
	208	Repair and maintenance of buildings and accessories	3999	9600	7100	10000	10000	10000
	209	Office Supplies	9993	20000	6000	20000	22500	23200
	210	Raw materials (Medicines, Clothes, Food, Fuel)	496	5000	3000	5000	5600	6500
	211	Cleaning Services and supplies (including cleaning materials)	37952	25300	16858	27000	27900	28900
	213	Official Travel Missions	4999	6300	4800	7300	7400	7500
	214	Other goods and services expenses	5991	10100	9200	10000	11700	12700
		Total	710735	695000	599000	636000	653000	666600
28		Other expenditures						
2821		Other current expenses						
	305	Non-Employees' Bonuses	485	500	500	0	0	0
		Total	485	500	500	0	0	0
		Total of Activity	7196948	7903491	7807491	8166000	8471000	8710600
Activity : 602 - Joint Fund (Quds Sharia Courts)								
Group	Item	Description	Actual 2011	Estimated 2012	Re-estimated 2012	Estimated 2013	Indicative 2014	Indicative 2015
25		Subsidies						
2511		Subsidies to public corporations						
	304	Subsidies to nonfinancial public corporations	100000	200000	200000	200000	200000	200000
		082 Joint Quds Fund	100000	200000	200000	200000	200000	200000
		Total	100000	200000	200000	200000	200000	200000
		Total of Activity	100000	200000	200000	200000	200000	200000
		Total of Program	7296948	8103491	8007491	8366000	8671000	8910600
		Total of Chapter	8863080	9947841	9714400	10359000	10816250	11128000

Overall Summary of Capital Expenditures For The Years 2011 - 2015

Chapter : 1201 Supreme Judge Department

(In JDs)

Group	Item	Description	Actual 2011	Estimated 2012	Re-Estimated 2012	Estimated 2013	Indicative 2014	Indicative 2015
		Expenditures						
22		Use of Goods and Services						
2211		Use of Goods and Services						
	510	Buildings and facilities repair and maintenance	83264	80000	69000	20000	20000	20000
	512	Operating and maintenance Expenses	477825	423500	400000	150000	145000	145000
		Total	561089	503500	469000	170000	165000	165000
28		Other expenditures						
2822		Other Capital expenditures						
	504	Studies, Researches and Consultations	2994	5000	5000	0	0	0
		Total	2994	5000	5000	0	0	0
		Fixed Assets						
31		Non-financial Assets						
3111		Buildings and Constructions						
	508	Works and Constructions	3763000	1700000	1680000	3100000	0	0
		Total	3763000	1700000	1680000	3100000	0	0
3112		Machinery and Equipment						
	505	Equipments, Machines and Apparatus	277743	180000	155000	45000	35000	35000
		Total	277743	180000	155000	45000	35000	35000
3113		Other Fixed Assets						
	511	Equipping and furnishing	601016	235000	55000	10000	10000	10000
		Total	601016	235000	55000	10000	10000	10000
3122		Inventories						
	503	Materials and supplies	24924	20000	15000	20000	20000	20000
		Total	24924	20000	15000	20000	20000	20000
		Total of Chapter	5230766	2643500	2379000	3345000	230000	230000

Capital Expenditures According to Program and Projects For the years 2011 - 2015

Chapter : 1201 Supreme Judge Department

(In JDs)

Program 1901 Administration and Support Services								
Project		002 Supreme Judge Department building						
Fund Source		102001 Capital (Treasury)						
Group	item	Description	Actual 2011	Estimated 2012	Re-Estimated 2012	Estimated 2013	Indicative 2014	Indicative 2015
31		Non-financial Assets						
3111		Buildings and Constructions						
	508	Works and Constructions						
	013	Miscellaneous Buildings Construction	3763000	1700000	1680000	3100000	0	0
		Total of Item	3763000	1700000	1680000	3100000	0	0
3113		Other Fixed Assets						
	511	Equipping and furnishing						
	006	Buildings and Facilities Furnishing and Equipping	455042	170000	0	0	0	0
		Total of Item	455042	170000	0	0	0	0
		Total of Project / Treasury	4218042	1870000	1680000	3100000	0	0
Project		004 Computerizing religious courts/Headquarters						
Fund Source		102001 Capital (Treasury)						
Group	item	Description	Actual 2011	Estimated 2012	Re-Estimated 2012	Estimated 2013	Indicative 2014	Indicative 2015
22		Use of Goods and Services						
2211		Use of Goods and Services						
	512	Operating and maintenance Expenses						
	008	Training expenses	0	5000	5000	0	0	0
	015	Operating systems and software	19826	20000	20000	0	0	0
	036	Computerization and automation operations exper	19789	30000	30000	0	0	0
		Total of Item	39615	55000	55000	0	0	0
31		Non-financial Assets						
3112		Machinery and Equipment						
	505	Equipments, Machines and Apparatus						
	001	Computers and accessories	44315	55000	55000	20000	20000	20000
		Total of Item	44315	55000	55000	20000	20000	20000
3113		Other Fixed Assets						
	511	Equipping and furnishing						
	009	Office Furniture and Apparatus	9743	0	0	0	0	0
		Total of Item	9743	0	0	0	0	0
		Total of Project / Treasury	93673	110000	110000	20000	20000	20000
Project		007 Courts of Jerusalem						
Fund Source		102001 Capital (Treasury)						
Group	item	Description	Actual 2011	Estimated 2012	Re-Estimated 2012	Estimated 2013	Indicative 2014	Indicative 2015
22		Use of Goods and Services						
2211		Use of Goods and Services						
	510	Buildings and facilities repair and maintenance						
	009	Miscellaneous buildings repair and renovation	20000	20000	15000	0	0	0
		Total of Item	20000	20000	15000	0	0	0
31		Non-financial Assets						
3112		Machinery and Equipment						
	505	Equipments, Machines and Apparatus						
	001	Computers and accessories	29943	10000	5000	0	0	0
	003	Office apparatus and equipment	10000	0	0	0	0	0
		Total of Item	39943	10000	5000	0	0	0
3113		Other Fixed Assets						
	511	Equipping and furnishing						
	006	Buildings and Facilities Furnishing and Equipping	40000	30000	20000	0	0	0
		Total of Item	40000	30000	20000	0	0	0
		Total of Project / Treasury	99943	60000	40000	0	0	0
		Total of Program	4411658	2040000	1830000	3120000	20000	20000

Capital Expenditures According to Program and Projects For the years 2011 - 2015

Chapter : 1201 Supreme Judge Department

(In JDs)

Program 1905 Sharia Judgement								
Project		001 Sharia Judgement Program Administration Project						
Fund Source		102001 Capital (Treasury)						
Group	item	Description	Actual 2011	Estimated 2012	Re-Estimated 2012	Estimated 2013	Indicative 2014	Indicative 2015
22		Use of Goods and Services						
2211		Use of Goods and Services						
	510	Buildings and facilities repair and maintenance						
	009	Miscellaneous buildings repair and renovation	19977	20000	20000	10000	10000	10000
		Total of Item	19977	20000	20000	10000	10000	10000
	512	Operating and maintenance Expenses						
	999	n.e.c	127999	40000	40000	60000	70000	70000
		Total of Item	127999	40000	40000	60000	70000	70000
31		Non-financial Assets						
3112		Machinery and Equipment						
	505	Equipments, Machines and Apparatus						
	003	Office apparatus and equipment	15722	20000	15000	0	0	0
		Total of Item	15722	20000	15000	0	0	0
3113		Other Fixed Assets						
	511	Equipping and furnishing						
	006	Buildings and Facilities Furnishing and Equipping	19992	20000	20000	10000	10000	10000
		Total of Item	19992	20000	20000	10000	10000	10000
3122		Inventories						
	503	Materials and supplies						
	999	n.e.c	9996	10000	10000	20000	20000	20000
		Total of Item	9996	10000	10000	20000	20000	20000
		Total of Project / Treasury	193686	110000	105000	100000	110000	110000
Project		002 Establishment of sharia execution directorate-Religious Courts						
Fund Source		102001 Capital (Treasury)						
Group	item	Description	Actual 2011	Estimated 2012	Re-Estimated 2012	Estimated 2013	Indicative 2014	Indicative 2015
22		Use of Goods and Services						
2211		Use of Goods and Services						
	510	Buildings and facilities repair and maintenance						
	009	Miscellaneous buildings repair and renovation	2610	0	0	0	0	0
		Total of Item	2610	0	0	0	0	0
	512	Operating and maintenance Expenses						
	999	n.e.c	4993	0	0	0	0	0
		Total of Item	4993	0	0	0	0	0
31		Non-financial Assets						
3112		Machinery and Equipment						
	505	Equipments, Machines and Apparatus						
	003	Office apparatus and equipment	2304	0	0	0	0	0
		Total of Item	2304	0	0	0	0	0
3113		Other Fixed Assets						
	511	Equipping and furnishing						
	006	Buildings and Facilities Furnishing and Equipping	7353	0	0	0	0	0
		Total of Item	7353	0	0	0	0	0
		Total of Project / Treasury	17260	0	0	0	0	0

Capital Expenditures According to Program and Projects For the years 2011 - 2015

Chapter : 1201 Supreme Judge Department

(In JDs)

Program 1905 Sharia Judgement								
Project		004 Household improvement and guidance						
Fund Source		102001 Capital (Treasury)						
Group	item	Description	Actual 2011	Estimated 2012	Re-Estimated 2012	Estimated 2013	Indicative 2014	Indicative 2015
22		Use of Goods and Services						
2211		Use of Goods and Services						
	510	Buildings and facilities repair and maintenance						
	009	Miscellaneous buildings repair and renovation	39970	30000	25000	5000	5000	5000
	999	n.e.c	0	10000	9000	5000	5000	5000
		Total of Item	39970	40000	34000	10000	10000	10000
	512	Operating and maintenance Expenses						
	008	Training expenses	120	10000	5000	0	0	0
	017	Promotion, advertising and PR	0	10000	10000	0	0	0
	999	n.e.c	74991	30000	30000	5000	5000	5000
		Total of Item	75111	50000	45000	5000	5000	5000
28		Other expenditures						
2822		Other Capital expenditures						
	504	Studies, Researches and Consultations						
	005	Social Studies	2994	5000	5000	0	0	0
		Total of Item	2994	5000	5000	0	0	0
31		Non-financial Assets						
3112		Machinery and Equipment						
	505	Equipments, Machines and Apparatus						
	001	Computers and accessories	13308	10000	5000	10000	10000	10000
	003	Office apparatus and equipment	12738	15000	10000	5000	5000	5000
		Total of Item	26046	25000	15000	15000	15000	15000
3113		Other Fixed Assets						
	511	Equipping and furnishing						
	006	Buildings and Facilities Furnishing and Equipping	48613	10000	10000	0	0	0
		Total of Item	48613	10000	10000	0	0	0
3122		Inventories						
	503	Materials and supplies						
	999	n.e.c	0	10000	5000	0	0	0
		Total of Item	0	10000	5000	0	0	0
		Total of Project / Treasury	192734	140000	114000	30000	30000	30000
Project		005 Establishment of the sharia courts Assembly - Zarqa						
Fund Source		102001 Capital (Treasury)						
Group	item	Description	Actual 2011	Estimated 2012	Re-Estimated 2012	Estimated 2013	Indicative 2014	Indicative 2015
22		Use of Goods and Services						
2211		Use of Goods and Services						
	510	Buildings and facilities repair and maintenance						
	008	Miscellaneous buildings maintenance	707	0	0	0	0	0
		Total of Item	707	0	0	0	0	0
31		Non-financial Assets						
3122		Inventories						
	503	Materials and supplies						
	999	n.e.c	9999	0	0	0	0	0
		Total of Item	9999	0	0	0	0	0
		Total of Project / Treasury	10706	0	0	0	0	0

Capital Expenditures According to Program and Projects For the years 2011 - 2015

Chapter : 1201 Supreme Judge Department

(In JDs)

Program 1905 Sharia Judgement								
Project		006 Preparing the sharia cassation legislation and establishing the sharia cassation court						
Fund Source		102001 Capital (Treasury)						
Group	item	Description	Actual 2011	Estimated 2012	Re-Estimated 2012	Estimated 2013	Indicative 2014	Indicative 2015
22		Use of Goods and Services						
2211		Use of Goods and Services						
	512	Operating and maintenance Expenses						
	999	n.e.c	4999	0	0	0	0	0
Total of Item			4999	0	0	0	0	0
Total of Project / Treasury			4999	0	0	0	0	0
Project		007 Establishment of General Prosecution Court						
Fund Source		102001 Capital (Treasury)						
Group	item	Description	Actual 2011	Estimated 2012	Re-Estimated 2012	Estimated 2013	Indicative 2014	Indicative 2015
22		Use of Goods and Services						
2211		Use of Goods and Services						
	512	Operating and maintenance Expenses						
	999	n.e.c	9901	10000	10000	5000	0	0
Total of Item			9901	10000	10000	5000	0	0
31		Non-financial Assets						
3112		Machinery and Equipment						
	505	Equipments, Machines and Apparatus						
	001	Computers and accessories	0	10000	5000	0	0	0
	999	n.e.c	4998	0	0	0	0	0
Total of Item			4998	10000	5000	0	0	0
3113		Other Fixed Assets						
	511	Equipping and furnishing						
	009	Office Furniture and Apparatus	6769	5000	5000	0	0	0
Total of Item			6769	5000	5000	0	0	0
Total of Project / Treasury			21668	25000	20000	5000	0	0
Project		008 Preparing the legislation of establishing the inheritance directorate						
Fund Source		102001 Capital (Treasury)						
Group	item	Description	Actual 2011	Estimated 2012	Re-Estimated 2012	Estimated 2013	Indicative 2014	Indicative 2015
22		Use of Goods and Services						
2211		Use of Goods and Services						
	512	Operating and maintenance Expenses						
	999	n.e.c	9992	0	0	0	0	0
Total of Item			9992	0	0	0	0	0
31		Non-financial Assets						
3112		Machinery and Equipment						
	505	Equipments, Machines and Apparatus						
	999	n.e.c	4998	0	0	0	0	0
Total of Item			4998	0	0	0	0	0
Total of Project / Treasury			14990	0	0	0	0	0

Capital Expenditures According to Program and Projects For the years 2011 - 2015

Chapter : 1201 Supreme Judge Department

(In JDs)

Program 1905 Sharia Judgement								
Project		010 Developing the archiving and filing system/Sharia Courts						
Fund Source		102001 Capital (Treasury)						
Group	item	Description	Actual 2011	Estimated 2012	Re-Estimated 2012	Estimated 2013	Indicative 2014	Indicative 2015
22		Use of Goods and Services						
2211		Use of Goods and Services						
	512	Operating and maintenance Expenses						
	036	Computerization and automation operations exper	25478	50000	50000	0	0	0
		Total of Item	25478	50000	50000	0	0	0
31		Non-financial Assets						
3112		Machinery and Equipment						
	505	Equipments, Machines and Apparatus						
	001	Computers and accessories	59439	40000	40000	10000	0	0
		Total of Item	59439	40000	40000	10000	0	0
		Total of Project / Treasury	84917	90000	90000	10000	0	0
Project		011 Delegating and training the judges/Sharia Courts						
Fund Source		102001 Capital (Treasury)						
Group	item	Description	Actual 2011	Estimated 2012	Re-Estimated 2012	Estimated 2013	Indicative 2014	Indicative 2015
22		Use of Goods and Services						
2211		Use of Goods and Services						
	512	Operating and maintenance Expenses						
	008	Training expenses	62279	30000	20000	10000	10000	10000
		Total of Item	62279	30000	20000	10000	10000	10000
		Total of Project / Treasury	62279	30000	20000	10000	10000	10000
Project		012 Establishing the inspection directorate						
Fund Source		102001 Capital (Treasury)						
Group	item	Description	Actual 2011	Estimated 2012	Re-Estimated 2012	Estimated 2013	Indicative 2014	Indicative 2015
22		Use of Goods and Services						
2211		Use of Goods and Services						
	512	Operating and maintenance Expenses						
	999	n.e.c	4999	0	0	0	0	0
		Total of Item	4999	0	0	0	0	0
31		Non-financial Assets						
3113		Other Fixed Assets						
	511	Equipping and furnishing						
	009	Office Furniture and Apparatus	9684	0	0	0	0	0
		Total of Item	9684	0	0	0	0	0
3122		Inventories						
	503	Materials and supplies						
	999	n.e.c	4929	0	0	0	0	0
		Total of Item	4929	0	0	0	0	0
		Total of Project / Treasury	19612	0	0	0	0	0

Capital Expenditures According to Program and Projects For the years 2011 - 2015

Chapter : 1201 Supreme Judge Department

(In JDs)

Program 1905 Sharia Judgement								
Project		013 Computerizing sharia courts-sharia courts						
Fund Source		102001 Capital (Treasury)						
Group	item	Description	Actual 2011	Estimated 2012	Re-Estimated 2012	Estimated 2013	Indicative 2014	Indicative 2015
22		Use of Goods and Services						
2211		Use of Goods and Services						
	512	Operating and maintenance Expenses						
	008	Training expenses	5828	10000	10000	0	0	0
	015	Operating systems and software	66782	150000	150000	70000	30000	30000
	999	n.e.c	29914	20000	20000	0	30000	30000
		Total of Item	102524	180000	180000	70000	60000	60000
31		Non-financial Assets						
3112		Machinery and Equipment						
	505	Equipments, Machines and Apparatus						
	001	Computers and accessories	79978	20000	20000	0	0	0
		Total of Item	79978	20000	20000	0	0	0
3113		Other Fixed Assets						
	511	Equipping and furnishing						
	009	Office Furniture and Apparatus	3820	0	0	0	0	0
		Total of Item	3820	0	0	0	0	0
		Total of Project / Treasury	186322	200000	200000	70000	60000	60000
Project		017 Judges assistants system						
Fund Source		102001 Capital (Treasury)						
Group	item	Description	Actual 2011	Estimated 2012	Re-Estimated 2012	Estimated 2013	Indicative 2014	Indicative 2015
22		Use of Goods and Services						
2211		Use of Goods and Services						
	512	Operating and maintenance Expenses						
	999	n.e.c	9935	8500	0	0	0	0
		Total of Item	9935	8500	0	0	0	0
		Total of Project / Treasury	9935	8500	0	0	0	0
		Total of Program	819108	603500	549000	225000	210000	210000
		Total of Chapter	5230766	2643500	2379000	3345000	230000	230000